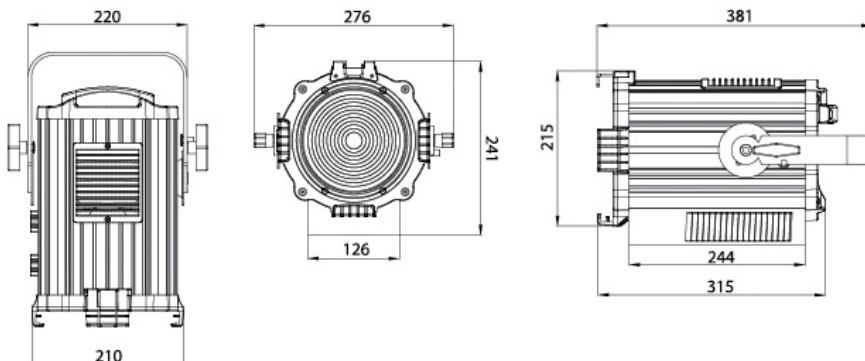


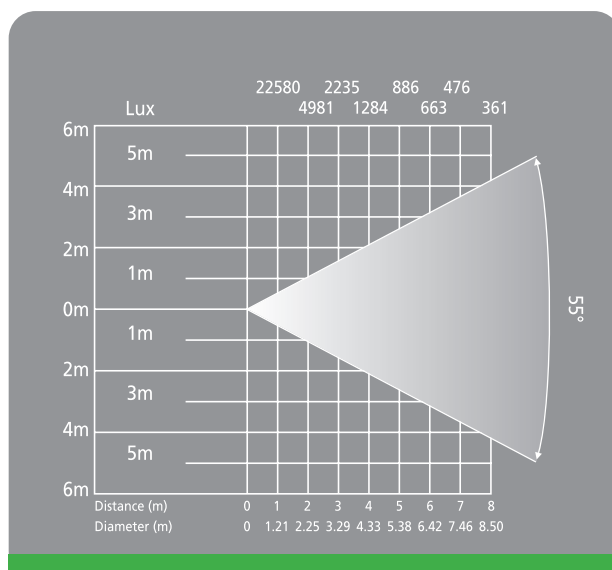
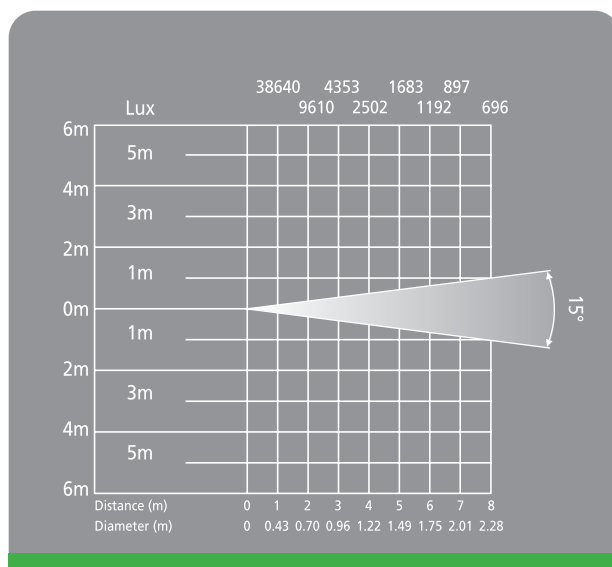
AVS-LED-W1550Z

LED PROFILE WASH 100

www.avshk.com



- 電源輸入: AC100V-240V, 50Hz/60Hz
- 額定功率: 150W
- 燈珠: COB 集成, 100W, 白光
- 光通量: 7000lm – 8000lm
- 燈珠壽命: >50,000 小時
- 色溫: 3200K 或 5600K 可選
- 顯色指數 (CRI): $\geq 85Ra$ 或 $\geq 95Ra$ 可選
- 調光: 0-100% 線性調光
- 出光角度: $15^\circ - 55^\circ$
- 縮放: 手動調節
- 頻閃: 多種頻閃功能, 1-20 次 / 秒
- 散熱: 高品質散熱器配無噪音風扇
- 顯示: LED 顯示
- 控制模式: 國際標準的 DMX 512 信號, 配有 XLR3Pin 與 XLR5Pin 兩種信號插座
- 通道模式: 1 通道與 2 通道兩種通道模式, 可自行設定
- 防護等級: IP20
- 使用環境溫度: $-20^\circ - 45^\circ$
- 淨重: 5.8kgs ● 毛重: 7.5kgs
- 包裝尺寸: 425mm (長) x 315mm (闊) x 320mm (高)



- Power Supply: AC100V-240V, 50Hz/60Hz
- Power Consumption: 150W
- Lamp: COB Led 100W, White
- Luminous flux: 7000lm – 8000lm
- Lifetime of led: More than 50000 hours
- Color Temperature: 3200K and 5600K are available
- CRI: $\geq 85Ra$ or $\geq 95Ra$
- LED life: >50,000H
- Dimmer: 0-100% Linear Dimmer
- Beam angle: $15^\circ - 45^\circ$
- Zoom: Adjusted by manual
- Strobe: 1-20 Flash per second
- High quality radiator, fan without noise
- Display: LCD display
- Control mode: International standard DMX 512 signal, with XLR3Pin and XLR5Pin connectors
- Channel mode: 1 channel mode and 2 channels mode
- Protection grade: IP20
- Environment temperature: $-20^\circ C - 45^\circ C$
- N.W.: 5.8kgs ● G.W.: 7.5kgs
- Dimensions: 425mm (L) x 315mm (W) x 320mm (H)

DMX CONTROL CHANNEL					Mode 1	Mode 2
1						
2	Dimmer Intensity 調光	000-007	(0-100%)	008-255	CH 1	CH1
	Strobe 頻閃	000 001		255	CH2	